

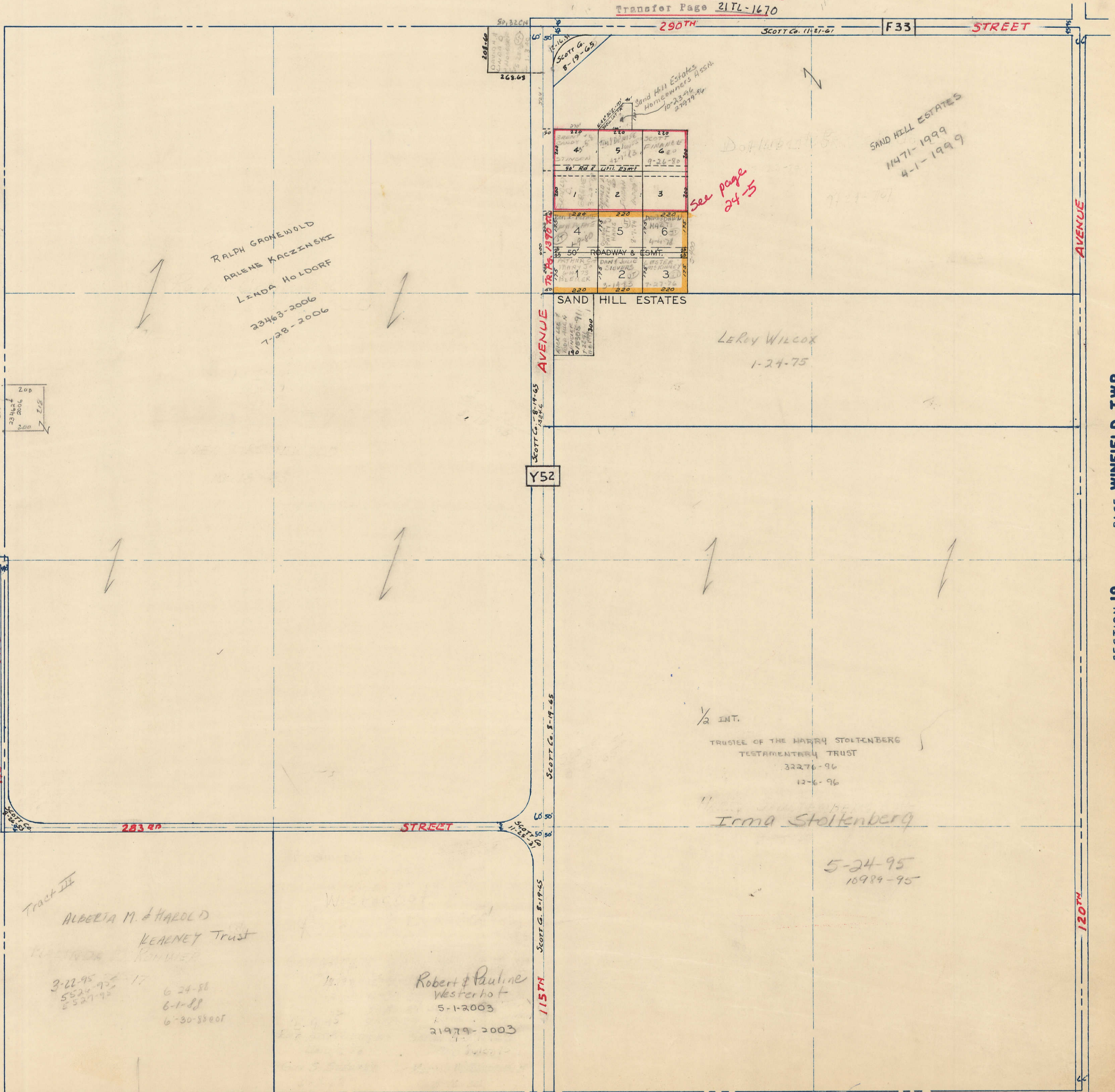
SECTION 24
TOWNSHIP 80 NORTH, RANGE 2 EAST,
5TH PRINCIPAL MERIDIAN
ALLENS GROVE TOWNSHIP
SCOTT COUNTY, IOWA

TRANSFER PAGE 19

SCALE: 1 INCH = 330 FEET

SECTION 13 PAGE 13

SAND HILL ESTATES FIRST ANNEX
Transfer Page 21TL-1670



SECTION 23 PAGE 23

SECTION 19 PAGE WINFIELD TWP.

SECTION 25 PAGE 25